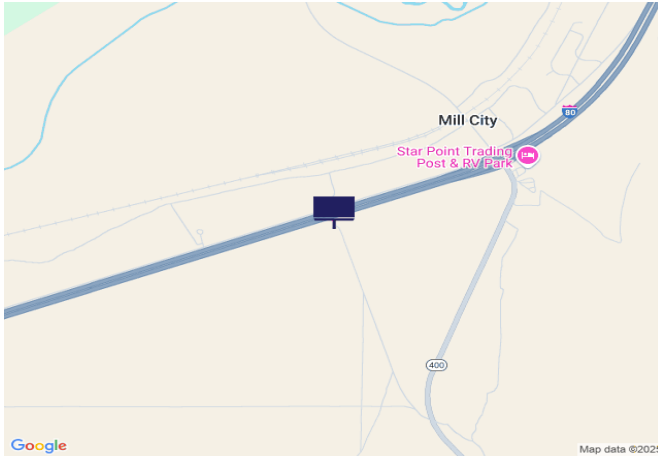




IR80/US95, 2500 Ft W of SR400



Location Description : Interstate Route 80/U.S. Route 95, 2500 Feet West of State Route 400

Traffic Direction : Eastbound

Monthly Viewers : 131,100

Size : 15' x 50'

City: Mill City

County: Pershing

Zip: 89418

GPS : 40.673698, -118.082795

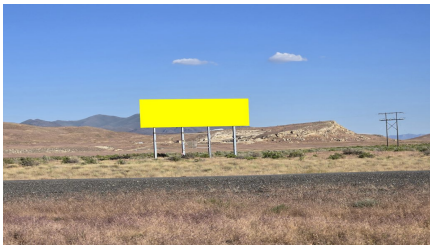
Mile Post : 149.4

Read : Right

Illumination : No

Inventory: 01164

Availability : Available Now



FOR MORE INFORMATION CONTACT ROBERT KENNERSON, SALES AGENT

(775) 835-3825

Additional Locations Available