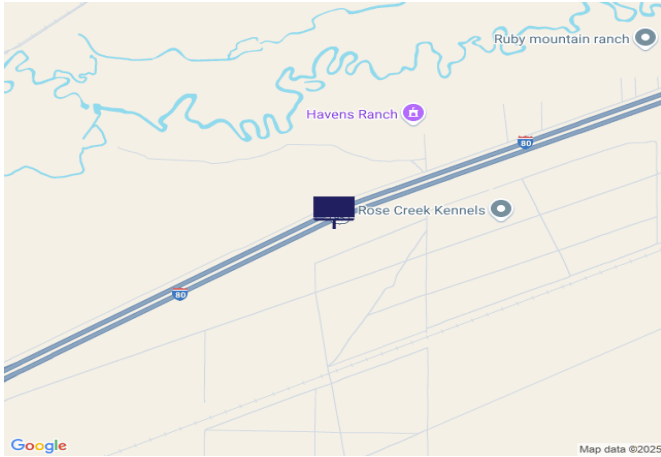




IR80/US95, 1.7 mi E of Rose Creek Exit 168



Location Description : Interstate Route 80/U.S. Route 95, 1.7 miles East of Rose Creek Exit 168

Traffic Direction : Westbound

Monthly Viewers : 143,520

Size : 14' x 48'

City: Winnemucca

County: Humboldt

Zip: 89445

GPS : 40.909673, -117.859748

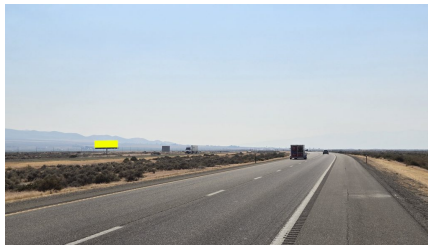
Mile Post : 169.9

Read : Left

Illumination : No

Inventory: 01116

Availability : Available Now



FOR MORE INFORMATION CONTACT ROBERT KENNERSON, SALES AGENT

(775) 835-3825

Additional Locations Available