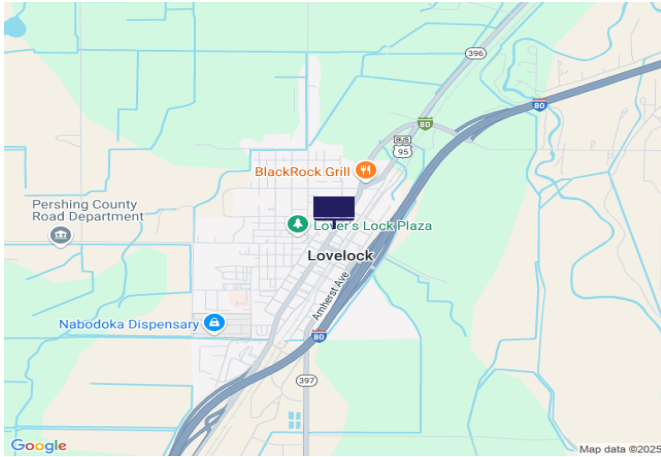
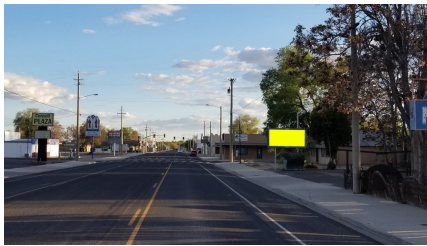




## Cornell Ave (IBR80/SR396), 500' N of Main St (SR398)



**Location Description :** Cornell Avenue (Interstate Business Route 80/State Route 396), 500 feet North of Main Street (State Route 398)  
**Traffic Direction :** Southbound  
**Monthly Viewers :** 40,380  
**Size :** 5' x 11'  
**City:** Lovelock  
**County:** Pershing  
**Zip:** 89419  
**GPS :** 40.181328, -118.473895  
**Mile Post :** N/A  
**Read :** Right  
**Illumination :** Yes  
**Inventory :** 01132  
**Availability :** Occupied



FOR MORE INFORMATION CONTACT ROBERT KENNERSON, SALES AGENT

(775) 835-3825

Additional Locations Available