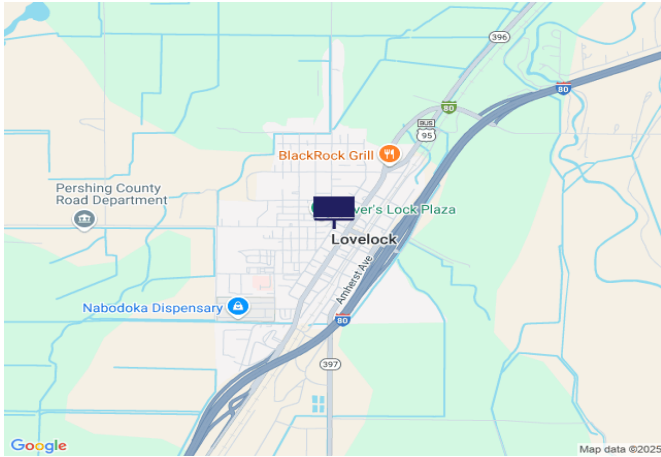
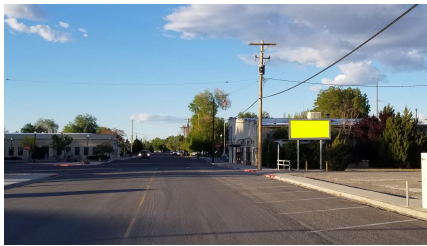




Dartmouth Ave, 150 Ft S of Main St (SR398)



Location Description : Dartmouth Avenue, 150 Feet South of Main Street (State Route 398)
Traffic Direction : Northbound
Monthly Viewers : 12,930
Size : 5' x 11'
City: Lovelock
County: Pershing
Zip: 89419
GPS : 40.180024, -118.4759
Mile Post : N/A
Read : Right
Illumination : No
Inventory: 01140
Availability : Occupied



FOR MORE INFORMATION CONTACT ROBERT KENNERSON, SALES AGENT

(775) 835-3825

Additional Locations Available