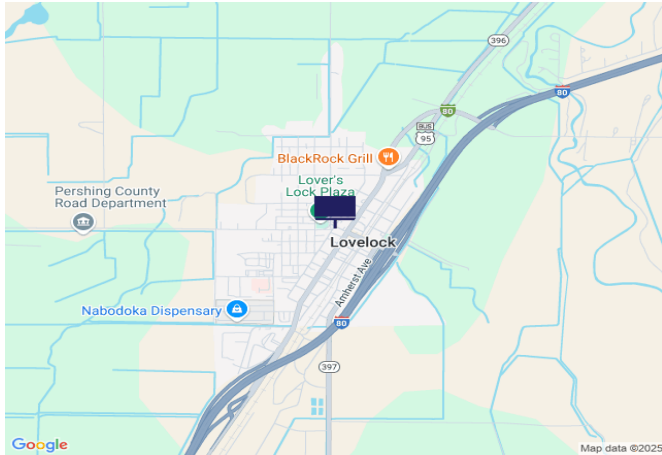




## Main St (SR398), at Corner of Dartmouth Ave, Western Ave (SR854), and Central Ave



**Location Description :** Main Street (State Route 398), at Five-Point Intersection Corner of Dartmouth Avenue, Western Avenue (State Route 854), and Central Avenue

**Traffic Direction :** Eastbound

**Monthly Viewers :** 19,860

**Size :** 5' x 11'

**City:** Lovelock

**County:** Pershing

**Zip:** 89419

**GPS :** 40.1803389, -118.4757

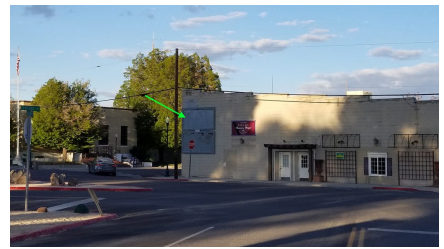
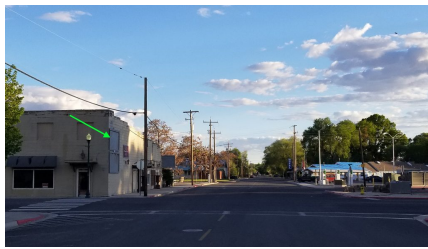
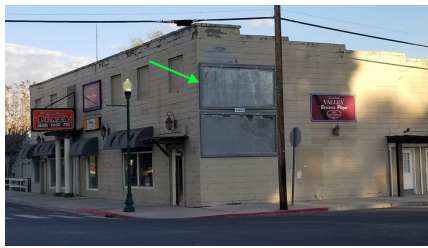
**Mile Post :** N/A

**Read :** Right

**Illumination :** No

**Inventory:** 01142

**Availability :** Available Now



FOR MORE INFORMATION CONTACT ROBERT KENNERSON, SALES AGENT

(775) 835-3825

Additional Locations Available