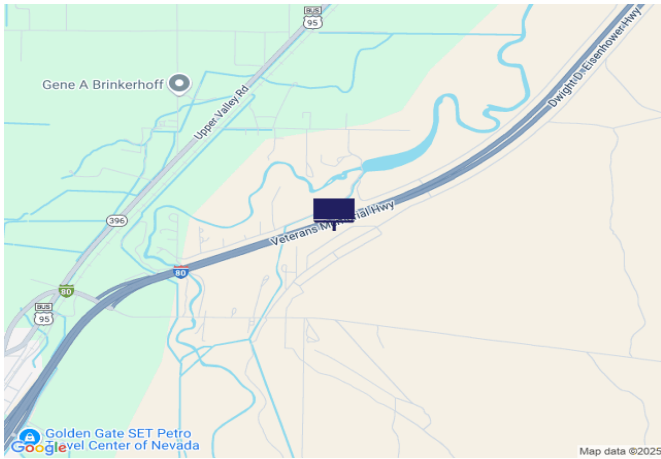




IR80/US95, 1.1 mi E of Airport Rd



Location Description : Interstate Route 80/U.S. Route 95, 1.1 miles East of Airport Road

Traffic Direction : Westbound

Monthly Viewers : 223,560

Size : 14' x 48'

City: Lovelock

County: Pershing

Zip: 89419

GPS : 40.193956, -118.444035

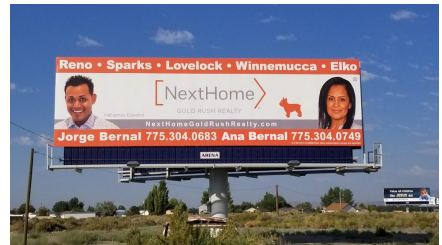
Mile Post : 108.0

Read : Left

Illumination : Yes

Inventory : 01096

Availability : Occupied



FOR MORE INFORMATION CONTACT ROBERT KENNERSON, SALES AGENT

(775) 835-3825

Additional Locations Available