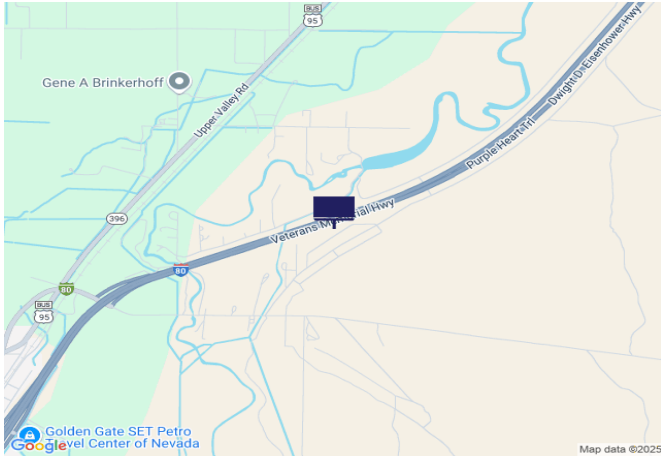




IR80/US95, 1.9 mi W of Irish-American Dam Rd



Location Description : Interstate Route 80/U.S. Route 95, 1.9 miles West of Irish-American Dam Road

Traffic Direction : Eastbound

Monthly Viewers : 223,560

Size : 14' x 48'

City: Lovelock

County: Pershing

Zip: 89419

GPS : 40.193956, -118.444035

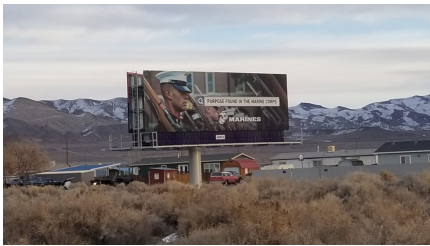
Mile Post : 108.0

Read : Right

Illumination : Yes

Inventory: 01095

Availability : Occupied



FOR MORE INFORMATION CONTACT ROBERT KENNERSON, SALES AGENT

(775) 835-3825

Additional Locations Available