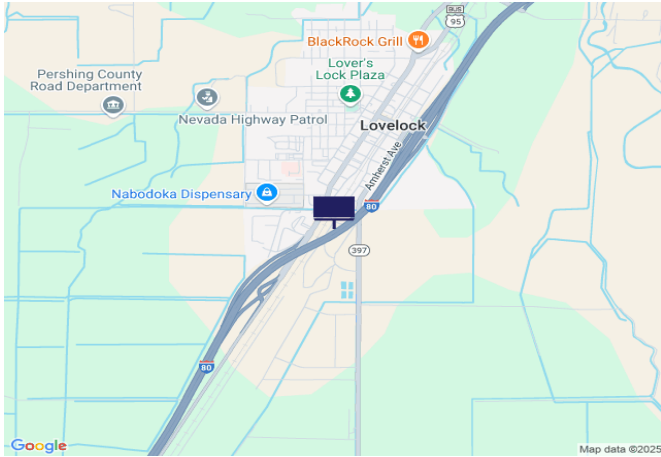




IR80/US95, 0.5 mi W of Main St



Location Description : Interstate Route 80/U.S. Route 95, 0.5 miles West of Main Street

Traffic Direction : Westbound

Monthly Viewers : 209,070

Size : 14' x 48'

City: Lovelock

County: Pershing

Zip: 89419

GPS : 40.171353, -118.478254

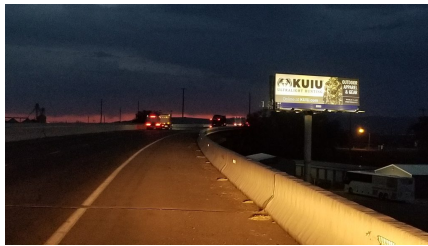
Mile Post : 105.5

Read : Right

Illumination : Yes

Inventory : 01076

Availability : Occupied



FOR MORE INFORMATION CONTACT ROBERT KENNERSON, SALES AGENT

(775) 835-3825

Additional Locations Available