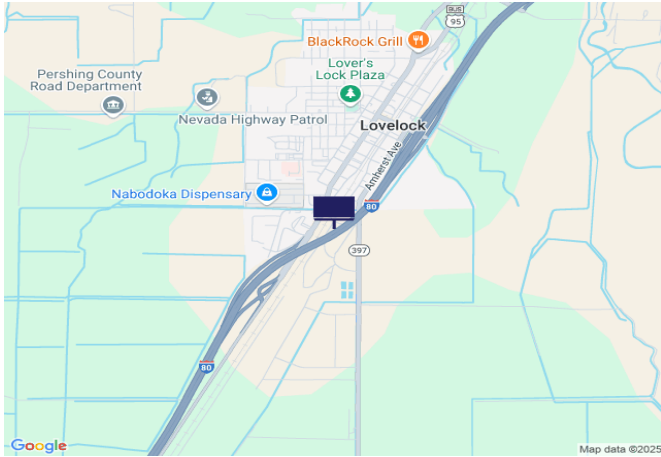




## IR80/US95, 0.3 mi W of Downtown Lovelock Exit 106



**Location Description :** Interstate Route 80/U.S. Route 95, 0.3 miles West of Downtown Lovelock Exit 106

**Traffic Direction :** Eastbound

**Monthly Viewers :** 209,070

**Size :** 14' x 48'

**City:** Lovelock

**County:** Pershing

**Zip:** 89419

**GPS :** 40.171353, -118.478254

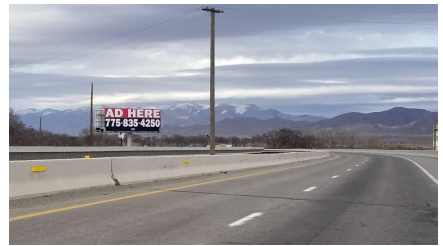
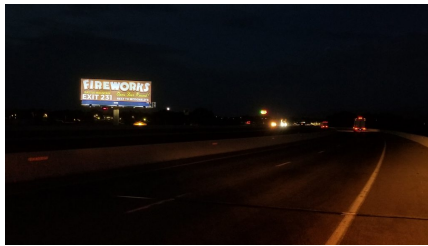
**Mile Post :** 105.5

**Read :** Left

**Illumination :** Yes

**Inventory:** 01075

**Availability :** Occupied



FOR MORE INFORMATION CONTACT ROBERT KENNERSON, SALES AGENT

(775) 835-3825

Additional Locations Available