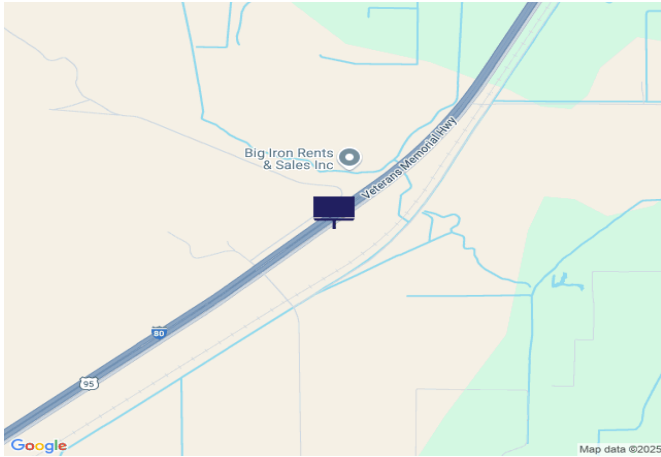


# ARENA OUTDOOR ADVERTISING

## IR80/US95, 2.2 mi W of W Lovelock Exit 105



**Location Description :** Interstate Route 80/U.S. Route 95, 2.2 miles West of West Lovelock Exit 105

**Traffic Direction :** Eastbound

**Monthly Viewers :** 144,900

**Size :** 16' x 40'

**City:** Lovelock

**County:** Pershing

**Zip:** 89419

**GPS :** 40.13422, -118.51168

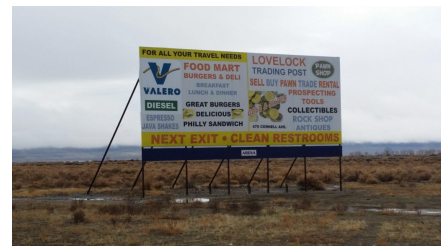
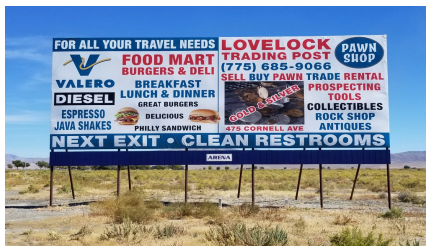
**Mile Post :** 102.3

**Read :** Right

**Illumination :** No

**Inventory:** 01079

**Availability :** Occupied



FOR MORE INFORMATION CONTACT ROBERT KENNERSON, SALES AGENT

(775) 835-3825

Additional Locations Available