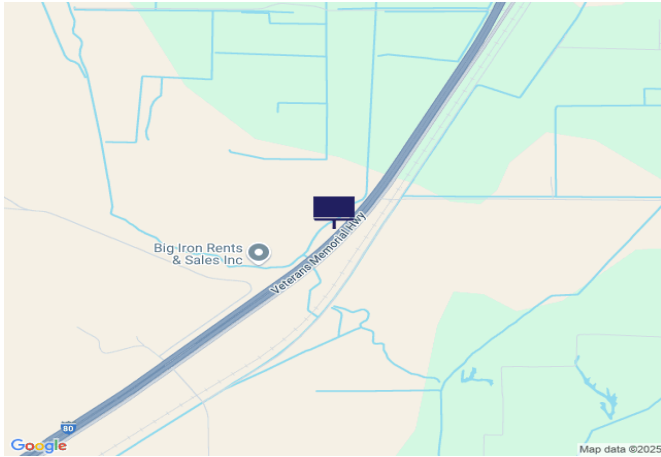
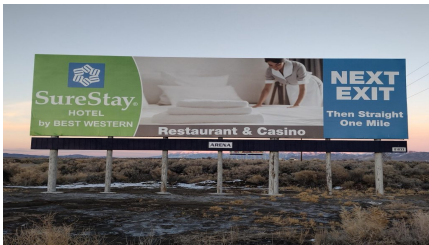




IR80/US95, 1.6 mi W of W Lovelock Exit 105



Location Description : Interstate Route 80/U.S. Route 95, 1.6 miles West of West Lovelock Exit 105
Traffic Direction : Eastbound
Monthly Viewers : 144,900
Size : 14' x 48'
City: Lovelock
County: Pershing
Zip: 89419
GPS : 40.141512, -118.504111
Mile Post : 103.0
Read : Left
Illumination : No
Inventory: 01033
Availability : Occupied



FOR MORE INFORMATION CONTACT ROBERT KENNERSON, SALES AGENT

(775) 835-3825

Additional Locations Available