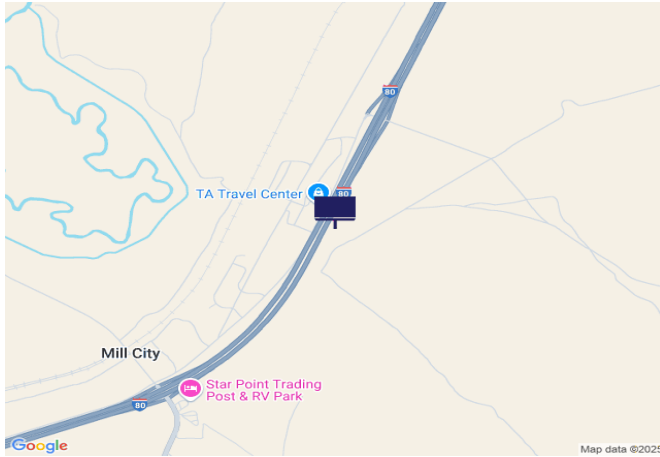




IR80/US95, 1.1 mi E of SR400



Location Description : Interstate Route 80/U.S. Route 95, 1.1 miles East of State Route 400

Traffic Direction : Westbound

Monthly Viewers : 129,030

Size : 14' x 48'

City: Mill City

County: Pershing

Zip: 89418

GPS : 40.691366, -118.054614

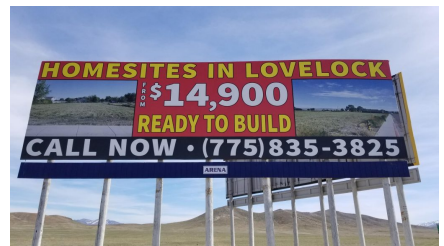
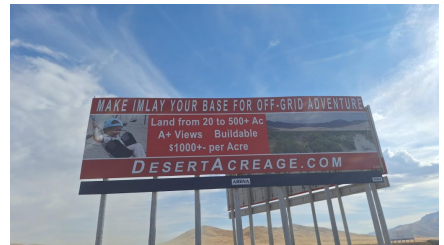
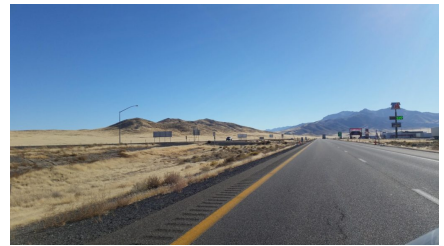
Mile Post : 151.1

Read : Left

Illumination : No

Inventory : 01063

Availability : Available Now



FOR MORE INFORMATION CONTACT ROBERT KENNERSON, SALES AGENT

(775) 835-3825

Additional Locations Available