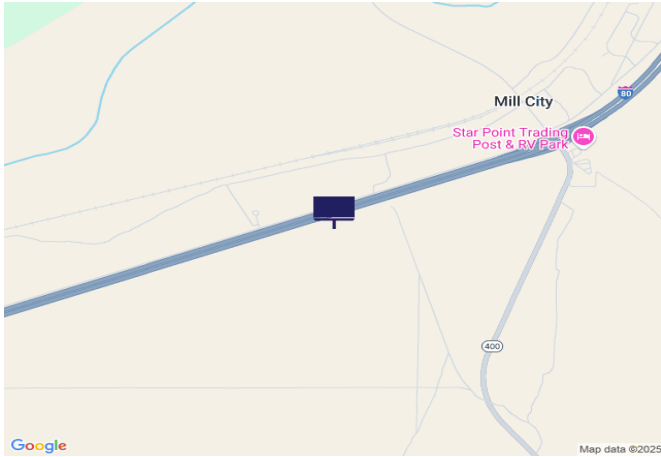




IR80/US95, 0.75 mi W of SR400



Location Description : Interstate Route 80/U.S. Route 95, 0.75 miles West of State Route 400

Traffic Direction : Eastbound

Monthly Viewers : 131,100

Size : 14' x 48'

City: Mill City

County: Pershing

Zip: 89418

GPS : 40.67227, -118.087434

Mile Post : 149.1

Read : Right

Illumination : No

Inventory : 01059

Availability : Occupied



FOR MORE INFORMATION CONTACT ROBERT KENNERSON, SALES AGENT

(775) 835-3825

Additional Locations Available