



IR80/US95, 1.2 mi E of Westfall Rd



Location Description : Interstate Route 80/U.S. Route 95, 1.2 miles East of Westfall Road

Traffic Direction : Westbound

Monthly Viewers : 144,900

Size : 14' x 48'

City: Lovelock

County: Pershing

Zip: 89419

GPS : 40.141512, -118.504111

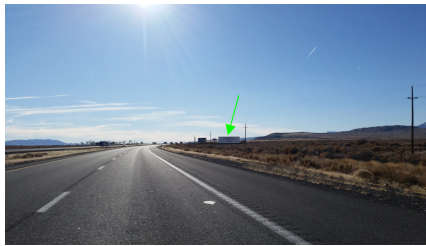
Mile Post : 103.0

Read : Right

Illumination : No

Inventory: 01032

Availability : Occupied



FOR MORE INFORMATION CONTACT ROBERT KENNERSON, SALES AGENT

(775) 835-3825

Additional Locations Available