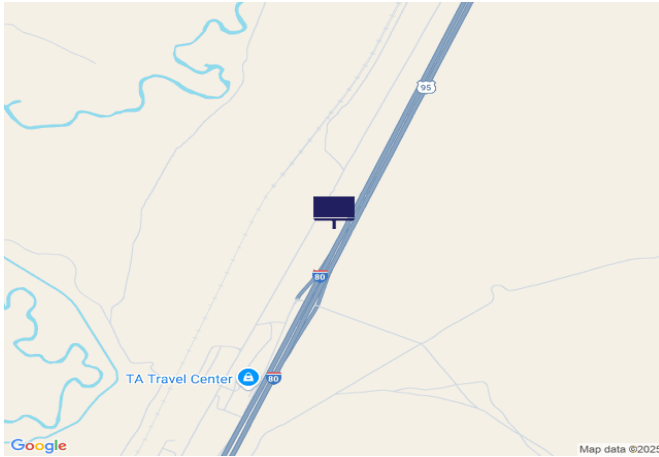




## IR80/US95, 5.9 mi W of Cosgrave Exit 158



**Location Description :** Interstate Route 80/U.S. Route 95, 5.9 miles West of Cosgrave Exit 158

**Traffic Direction :** Eastbound

**Monthly Viewers :** 136,620

**Size :** 14' x 48'

**City:** Mill City

**County:** Pershing

**Zip:** 89418

**GPS :** 40.705409, -118.048863

**Mile Post :** 151.8

**Read :** Left

**Illumination :** No

**Inventory:** 01053

**Availability :** Occupied



FOR MORE INFORMATION CONTACT ROBERT KENNERSON, SALES AGENT

(775) 835-3825

Additional Locations Available