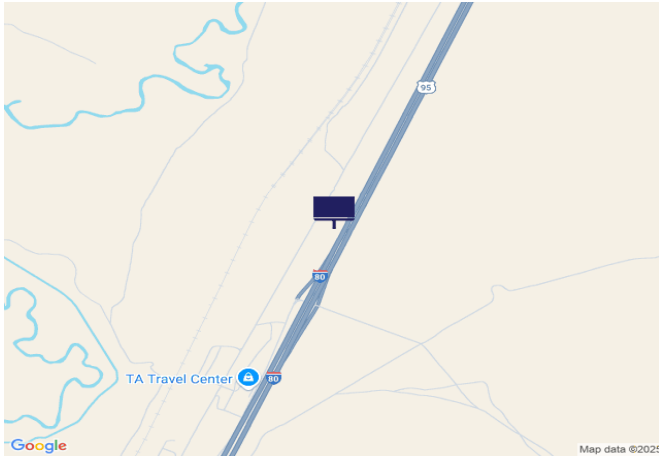




IR80/US95, 2000' E of Dun Glen Rd



Location Description : Interstate Route 80/U.S. Route 95, 2000 feet East of Dun Glen Road

Traffic Direction : Westbound

Monthly Viewers : 136,620

Size : 14' x 48'

City: Mill City

County: Pershing

Zip: 89418

GPS : 40.705409, -118.048863

Mile Post : 151.8

Read : Right

Illumination : No

Inventory: 01041

Availability : Occupied



FOR MORE INFORMATION CONTACT ROBERT KENNERSON, SALES AGENT

(775) 835-3825

Additional Locations Available