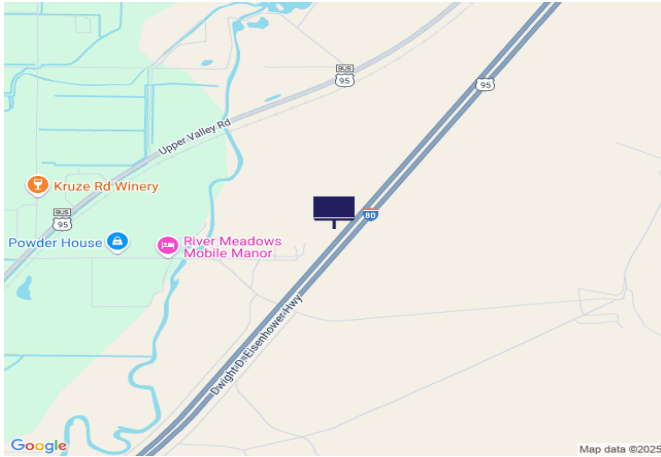




## IR80/US95, 2.0 mi W of Coal Canyon Rd



**Location Description :** Interstate Route 80/U.S. Route 95, 2.0 miles West of Coal Canyon Road

**Traffic Direction :** Eastbound

**Monthly Viewers :** 223,560

**Size :** 14' x 48'

**City:** Lovelock

**County:** Pershing

**Zip:** 89419

**GPS :** 40.218703, -118.413348

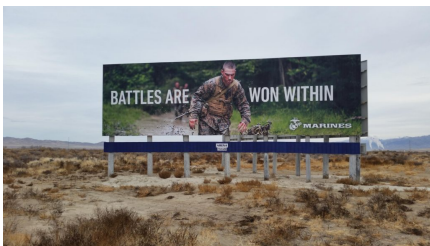
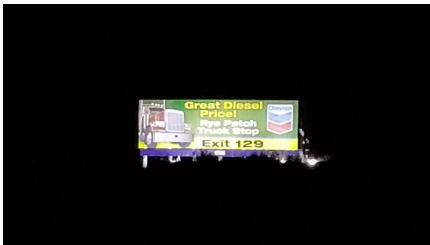
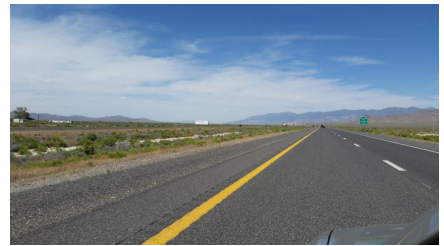
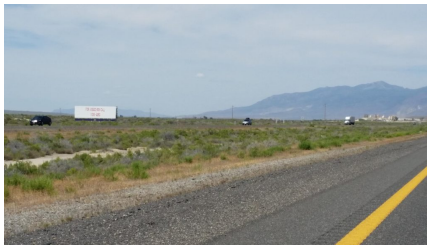
**Mile Post :** 110.4

**Read :** Left

**Illumination :** No

**Inventory:** 01039

**Availability :** Available Now



FOR MORE INFORMATION CONTACT ROBERT KENNERSON, SALES AGENT

(775) 835-3825

Additional Locations Available