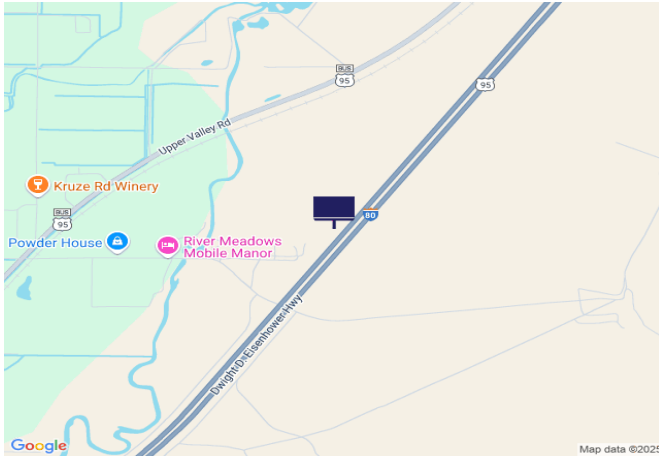




IR80/US95, 3.1 mi E of E Lovelock Exit 107



Location Description : Interstate Route 80/U.S. Route 95, 3.1 miles East of East Lovelock Exit 107

Traffic Direction : Westbound

Monthly Viewers : 223,560

Size : 14' x 48'

City: Lovelock

County: Pershing

Zip: 89419

GPS : 40.218703, -118.413348

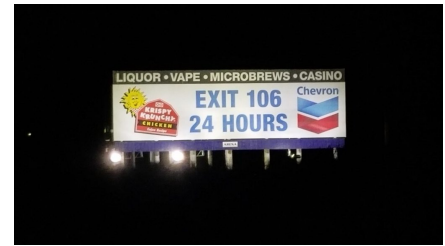
Mile Post : 110.4

Read : Right

Illumination : No

Inventory: 01038

Availability : Occupied



FOR MORE INFORMATION CONTACT ROBERT KENNERSON, SALES AGENT

(775) 835-3825

Additional Locations Available