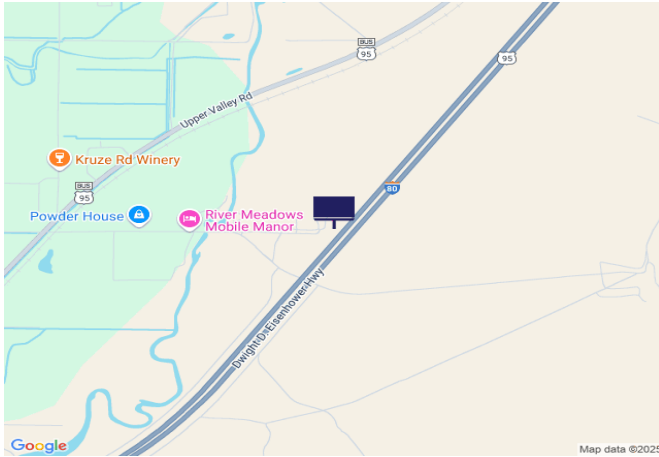
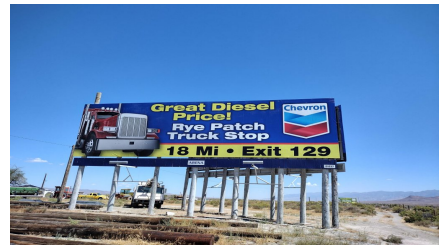




IR80/US95, 2.1 mi W of Coal Canyon Rd



Location Description : Interstate Route 80/U.S. Route 95, 2.1 miles West of Coal Canyon Road
Traffic Direction : Eastbound
Monthly Viewers : 223,560
Size : 14' x 48'
City: Lovelock
County: Pershing
Zip: 89419
GPS : 40.216688, -118.415108
Mile Post : 110.2
Read : Left
Illumination : No
Inventory: 01037
Availability : Occupied



FOR MORE INFORMATION CONTACT ROBERT KENNERSON, SALES AGENT

(775) 835-3825

Additional Locations Available