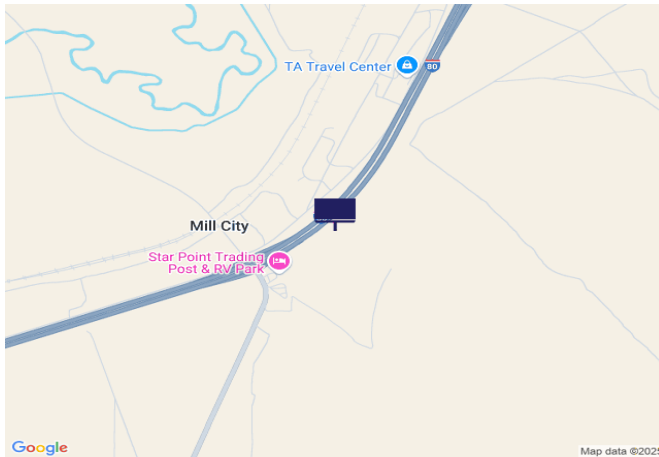




IR80/US95, 2000' E of SR400



Location Description : Interstate Route 80/U.S. Route 95, 2000 feet East of State Route 400
Traffic Direction : Westbound
Monthly Viewers : 122,130
Size : 14' x 48'
City: Mill City
County: Pershing
Zip: 89418
GPS : 40.68152, -118.062015
Mile Post : 150
Read : Left
Illumination : No
Inventory: 01008
Availability : Occupied



FOR MORE INFORMATION CONTACT ROBERT KENNERSON, SALES AGENT

(775) 835-3825

Additional Locations Available