



IR80/US95, 1.0 mi E of East Lovelock Exit 107



Location Description : Interstate Route 80/U.S. Route 95, 1.0 mile East of East Lovelock Exit 107

Traffic Direction : Westbound

Monthly Viewers : 149,040

Size : 14' x 48'

City: Lovelock

County: Pershing

Zip: 89419

GPS : 40.19665, -118.44065

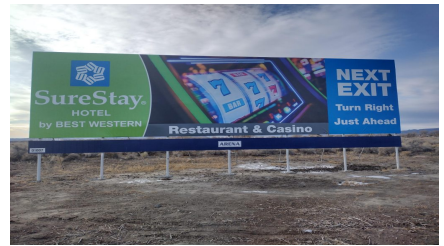
Mile Post : 108

Read : Right

Illumination : No

Inventory : 01007

Availability : Occupied



FOR MORE INFORMATION CONTACT ROBERT KENNERSON, SALES AGENT

(775) 835-3825

Additional Locations Available