



## IR80/US95, 3.5 mi W of Imlay Exit 145



**Location Description :** Interstate Route 80/U.S. Route 95, 3.5 miles west of Imlay Exit 145

**Traffic Direction :** Westbound

**Monthly Viewers :** 196,650

**Size :** 14' x 48'

**City:** Mill City

**County:** Pershing

**Zip:** 89418

**GPS :** 40.67712, -118.07748

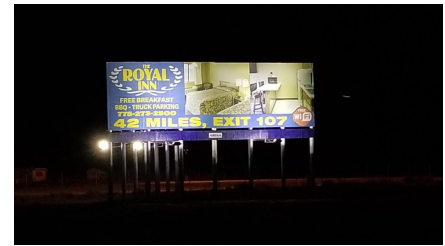
**Mile Post :** 149.5

**Read :** Right

**Illumination :** Yes

**Inventory:** 01005

**Availability :** Available Now



FOR MORE INFORMATION CONTACT ROBERT KENNERSON, SALES AGENT

(775) 835-3825

Additional Locations Available